

**PDX1 Antibody (C-term)**  
**Purified Rabbit Polyclonal Antibody (Pab)**  
**Catalog # AP2034b**

**Specification**

---

**PDX1 Antibody (C-term) - Product Information**

Application	WB,E
Primary Accession	<a href="#">O00330</a>
Reactivity	Human
Host	Rabbit
Clonality	Polyclonal
Isotype	Rabbit IgG
Calculated MW	54122
Antigen Region	429-459

**PDX1 Antibody (C-term) - Additional Information**

**Gene ID** 8050

**Other Names**

Pyruvate dehydrogenase protein X component, mitochondrial, Dihydrolipoamide dehydrogenase-binding protein of pyruvate dehydrogenase complex, E3-binding protein, E3BP, Lipoyl-containing pyruvate dehydrogenase complex component X, proX, PDHX, PDX1

**Target/Specificity**

This PDX1 antibody is generated from rabbits immunized with a KLH conjugated synthetic peptide between 429-459 amino acids from the C-terminal region of human PDX1.

**Dilution**

WB~~1:1000

E~~Use at an assay dependent concentration.

**Format**

Purified polyclonal antibody supplied in PBS with 0.09% (W/V) sodium azide. This antibody is prepared by Saturated Ammonium Sulfate (SAS) precipitation followed by dialysis against PBS.

**Storage**

Maintain refrigerated at 2-8°C for up to 2 weeks. For long term storage store at -20°C in small aliquots to prevent freeze-thaw cycles.

**Precautions**

PDX1 Antibody (C-term) is for research use only and not for use in diagnostic or therapeutic procedures.

**PDX1 Antibody (C-term) - Protein Information**

**Name** PDHX

**Synonyms** PDX1

**Function** Required for anchoring dihydrolipoamide dehydrogenase (E3) to the dihydrolipoamide transacetylase (E2) core of the pyruvate dehydrogenase complexes of eukaryotes. This specific binding is essential for a functional PDH complex.

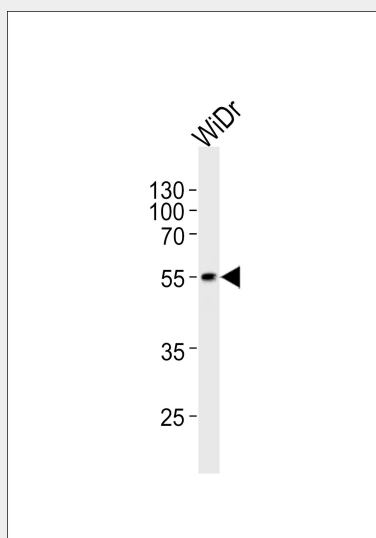
**Cellular Location**

Mitochondrion matrix.

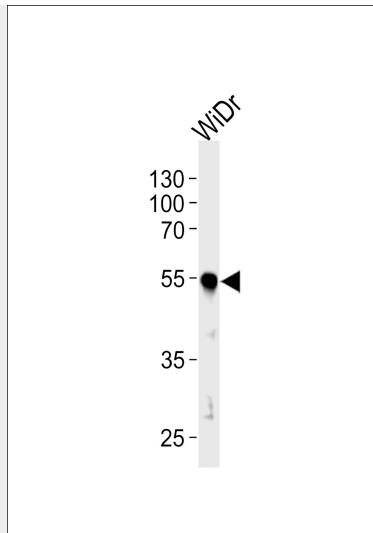
**PDX1 Antibody (C-term) - Protocols**

Provided below are standard protocols that you may find useful for product applications.

- [Western Blot](#)
- [Blocking Peptides](#)
- [Dot Blot](#)
- [Immunohistochemistry](#)
- [Immunofluorescence](#)
- [Immunoprecipitation](#)
- [Flow Cytometry](#)
- [Cell Culture](#)

**PDX1 Antibody (C-term) - Images**

Western blot analysis of lysate from WiDr cell line, using hPDX1R444(Cat. #AP2034b). AP2034b was diluted at 1:1000 at each lane. A goat anti-rabbit IgG H&L(HRP) at 1:5000 dilution was used as the secondary antibody. Lysate at 35ug per lane.



Western blot analysis of lysate from WiDr cell line, using hPDX1R444(Cat. #AP2034b). AP2034b was diluted at 1:1000 at each lane. A goat anti-rabbit IgG H&L(HRP) at 1:5000 dilution was used as the secondary antibody. Lysate at 35ug per lane.

#### **PDX1 Antibody (C-term) - Background**

PDX1, located in the mitochondrial matrix, is required for anchoring dihydrolipoamide dehydrogenase (E3) to the dihydrolipoamide transacetylase (E2) core of the pyruvate dehydrogenase complexes of eukaryotes. This specific binding is essential for a functional PDH complex. Eukaryotic pyruvate dehydrogenase complexes are organized about a core consisting of the oligomeric dihydrolipoamide acetyl-transferase, around which are arranged multiple copies of pyruvate dehydrogenase, dihydrolipoamide dehydrogenase and protein X bound by noncovalent bonds. Defects in PDHX are a cause of lacticacidemia. PDX1 belongs to the 2-oxoacid dehydrogenase family and contains 1 lipoyl-binding domain.

#### **PDX1 Antibody (C-term) - References**

Ling, M., et al., Hum. Mol. Genet. 7(3):501-505 (1998). Harris, R.A., et al., J. Biol. Chem. 272(32):19746-19751 (1997). Murray, J., et al., FEBS Lett. 529 (2-3), 173-178 (2002).